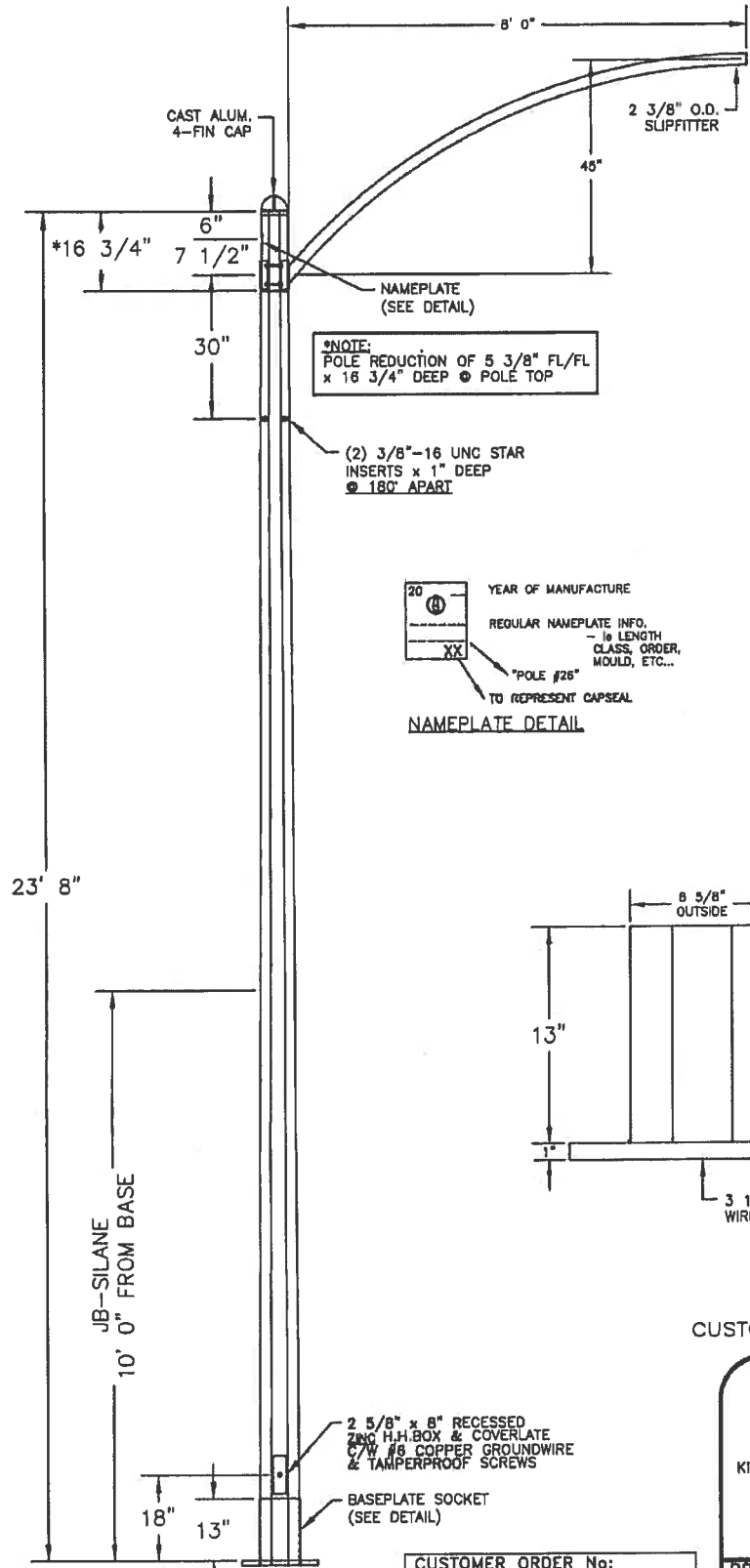


REV.	ALTERATION	DATE	BY



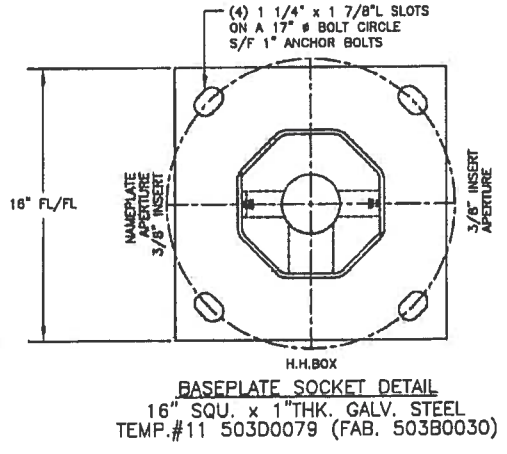
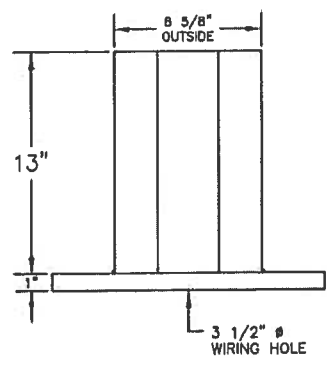
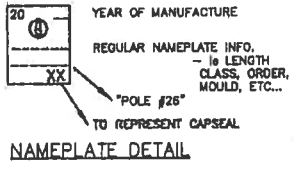
**ARM SPECIFICATIONS**

CATALOGUE NO.: KA168-S  
 QUANTITY:  
 MATERIAL: STEEL  
 FINISH: NATURAL FINISH

**POLE SPECIFICATIONS**

CATALOGUE NO.: P238-BPO-G-M00  
 C/W FC  
 QUANTITY:  
 SECTION: OCTAGONAL  
 COLOUR: MOULD FINISH  
 FINISH: MOULD FINISH  
 POLE TOP: 5 3/8" FL/FL  
 POLE BUTT: 8 5/8" FL/FL  
 POLE LENGTH: 23' 8"  
 APPROX WEIGHT: 1,030 lbs.

\*NOTE:  
 POLE REDUCTION OF 5 3/8" FL/FL  
 x 16 3/4" DEEP @ POLE TOP




CUSTOMER APPROVAL & DATE:

JB-SILANE  
 10' 0" FROM BASE

2 5/8" x 8" RECESSED  
 ZINC H.H. BOX & COVERLATE  
 C/W #6 COPPER GROUNDWIRE  
 & TAMPERPROOF SCREWS  
 BASEPLATE SOCKET  
 (SEE DETAIL)

CUSTOMER ORDER No:	-
STRESSCRETE ORDER No:	-
KMFG. ORDER No:	-



King Luminaire • StressCrete • Est. 1953

**STRESSCRETE GROUP**

Manufacturing Locations:

Burlington, Ontario 1-800-268-7809

Northport, Alabama 1-800-435-6563

Atchison, Kansas 1-800-837-1024

Jefferson, Ohio 1-800-268-7809

PROJECT/CUSTOMER: <b>Concrete Pole - NSTAR - Woburn JFD</b>				
DRAWN BY:	AT:	CHECKED BY:	DATE:	REVISION:
TASHI B.	SC1	<i>M.</i>	04/11/13	
DRAWING TYPE:			DRAWING NUMBER:	
CONCEPT DWG.			206A7347-1	