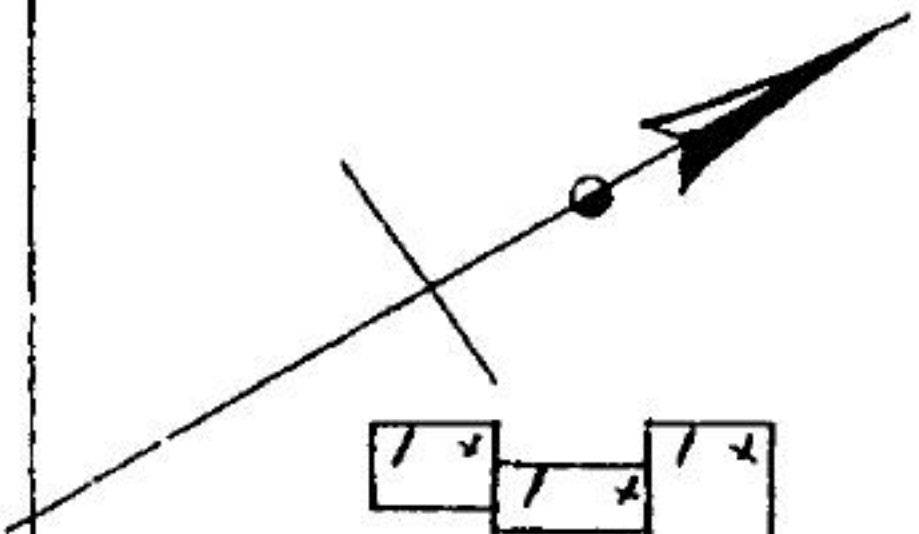
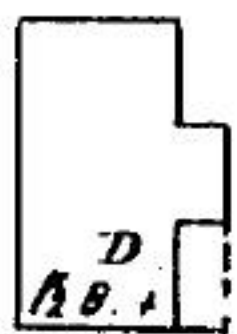


KIMBALL COURT

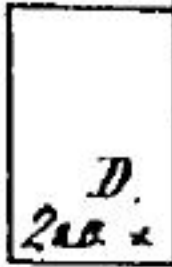


104

CHAS EATON
SHOE STOCK M'Y



● TR.H.
CUTTING & PRESSING M'T
PASTING & DRYING 2°
STORAGE RTIC.
POWER & HEAT STEAM.
LIGHTS KEROSENE
50' 1" HOSE



A.

35'

B.

C.

D.

30'

PEARL

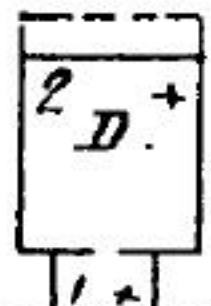
4" W. PIPE

TR.H.

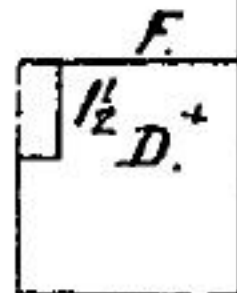
35'

E.

AT. N. WOBURN.
2 Miles N. of Woburn Common



105



1 x
25' 10" FR. DW.