

WARREN

Vac.

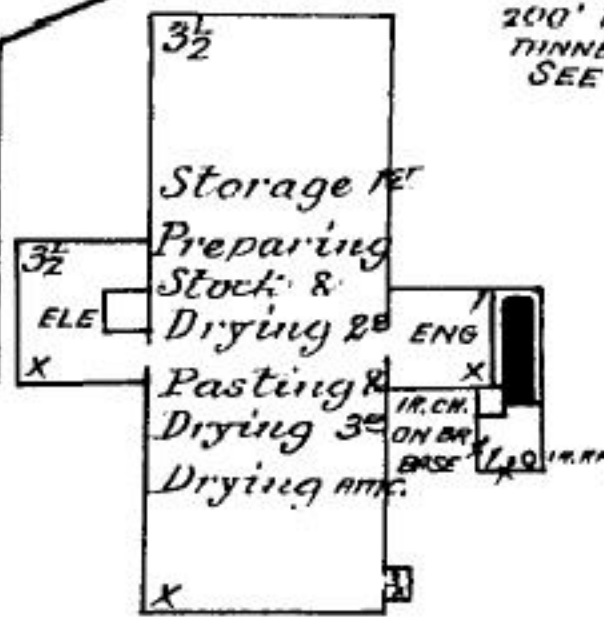
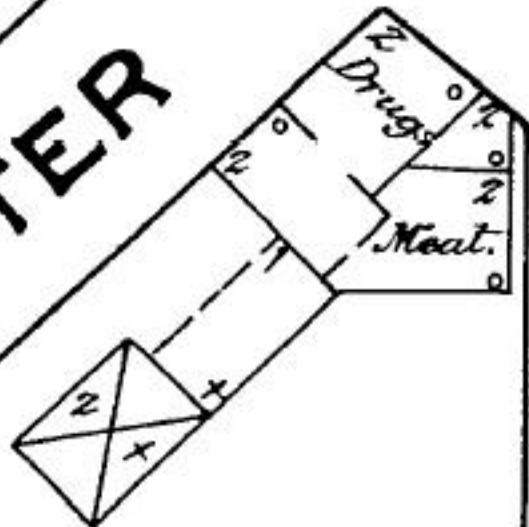
SEE SHEET No. 6.

FOWLE

VAC.

PORTER

200' TO MAXWELL BROS
TINNERY & CURRY SHOP.
SEE SHEET NO. 7.

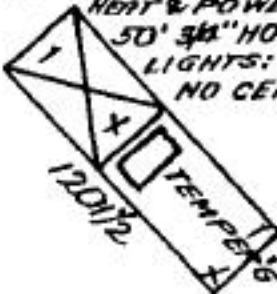


MAIN

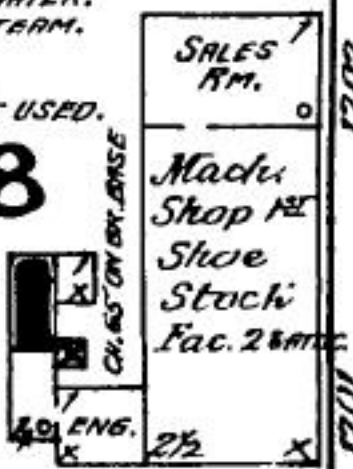
WILBUR E. CUMMINGS,
SHOE STOCK FAC.

NIGHT WATCHMAN IN WINTER.
HEAT & POWER: STEAM.
FUEL: COAL & TAN. LIGHTS: KEROS.
TOWN WATER, ST. F. PUMP.
SMALL W. TANK ATTIC.
50' 3/4" HOSE.
W. BARRELS & BUCKETS EA. FL.
NO CEMENT USED.

C. PORTER, M'F'R OF
BELT KNIVES & CURRIERS SUPPLIES.
NO WATCHMAN HEAT & POWER: STEAM.
LIGHTS: GAS. TOWN WATER, 100' 3/4" HOSE.
W.H. JONES, SHOE STOCK FAC. 2B & ATTIC.
NO WATCHMAN. TOWN WATER.
HEAT & POWER: STEAM.
50' 3/4" HOSE.
LIGHTS: GAS.
NO CEMENT USED.



28



29

Map Division
31 JUL 1925



HUDSON ST.

F.M.S
J. P. M.R.